

# Rolfe East



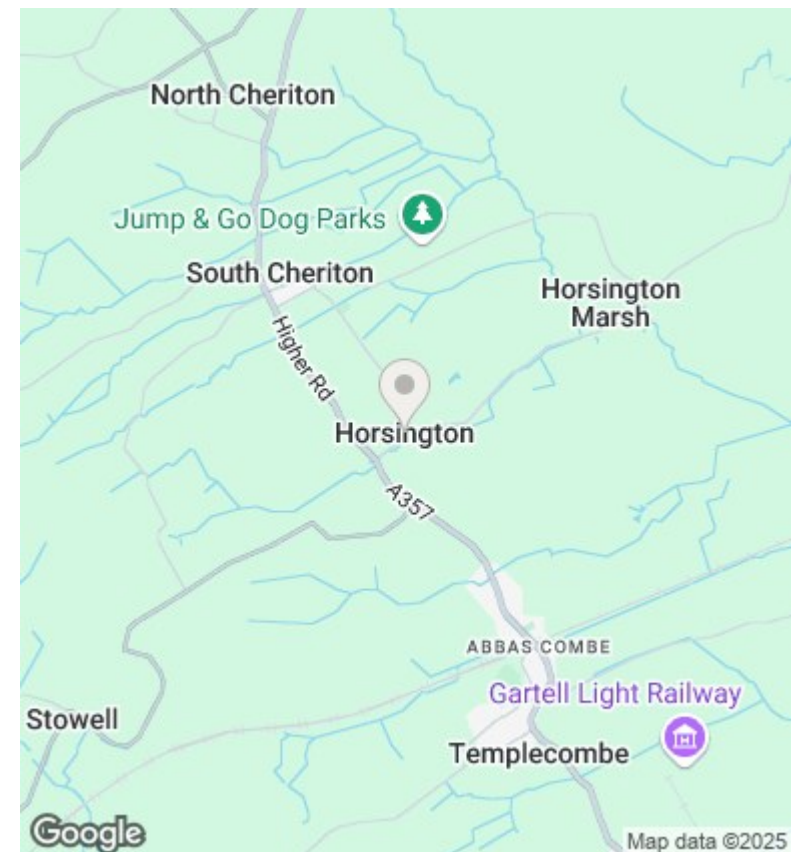
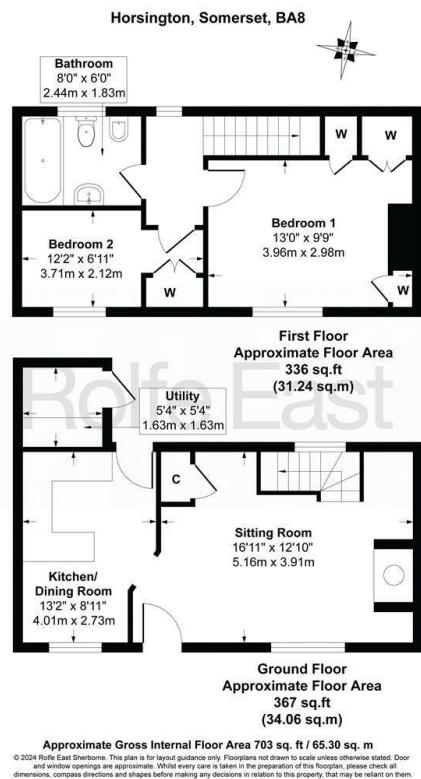
Horsington, BA8 0EF

Guide Price £325,000

- STUNNING DOUBLE-FRONTED PERIOD CHARACTER END OF TERRACE COTTAGE.
- CHARACTER INCLUDING WINDOW SEATS, STONE FIREPLACE AND EXPOSED BEAMS.
- FRONT GARDEN WITH SCOPE FOR OFF ROAD PARKING (subject to planning permission).
- SHORT DRIVE TO AMAZING HISTORIC TOWN CENTRE OF SHERBORNE.
- SOUGHT-AFTER VILLAGE LOCATION - A SHORT DRIVE TO RAILWAY STATION TO LONDON.
- ENVIABLY FREE FROM THE RESTRICTIONS OF GRADE II LISTING.
- SHORT WALK TO NEARBY COUNTRYSIDE AND VILLAGE PUB.
- PERIOD-STYLE DOUBLE GLAZING AND OIL-FIRED RADIATOR CENTRAL HEATING.
- TERRACED REAR GARDEN ARRANGED FOR LOW MAINTENANCE PURPOSES.
- TASTEFUL DECORATIVE ORDER THROUGHOUT.

80 Cheap Street, Sherborne, Dorset, DT9 3BJ  
01935 814 929

sherborne@rolfe-east.com  
<https://www.rolfe-east.com/>



## Directions

## Viewings

Viewings by arrangement only. Call 01935 814 929 to make an appointment.

## Council Tax Band

C

## EPC Rating:

E

